

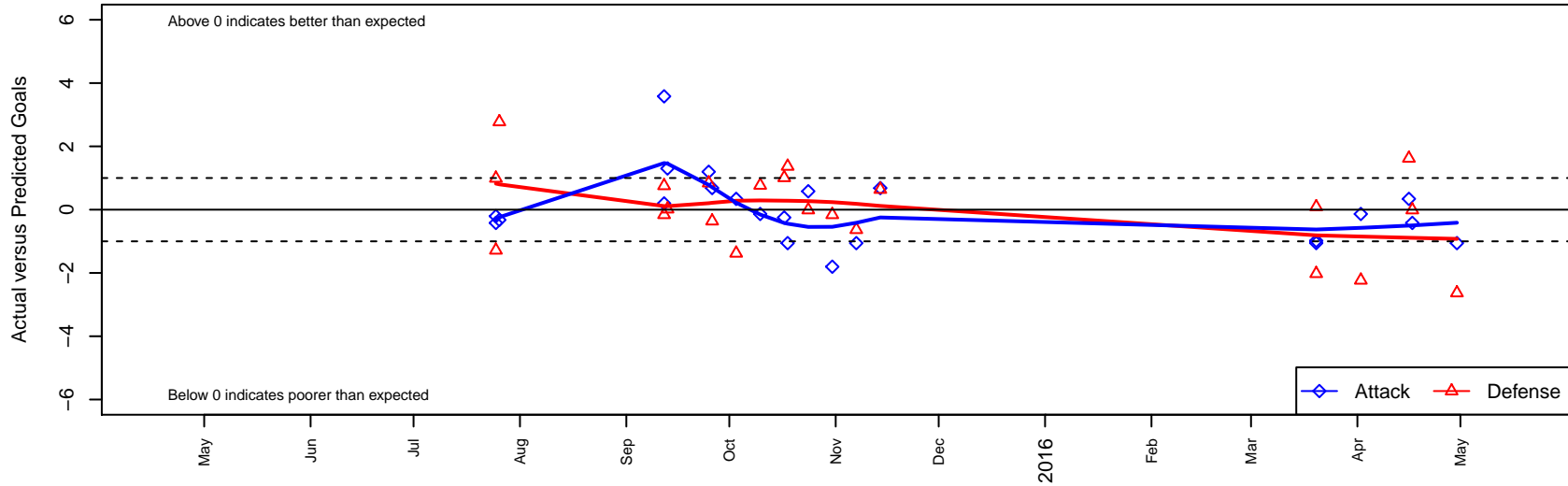
FC Spokane Black G03

FC Spokane
 Spokane, WA
 G03 total strength=336
 attack=0.18 defense=0.23
 fall league = PSPL–Inland Div 1 U12
 spr league = Spr PSPL–Inland Div 1 U12
 notes= Thompson 2014; Clayton 2015

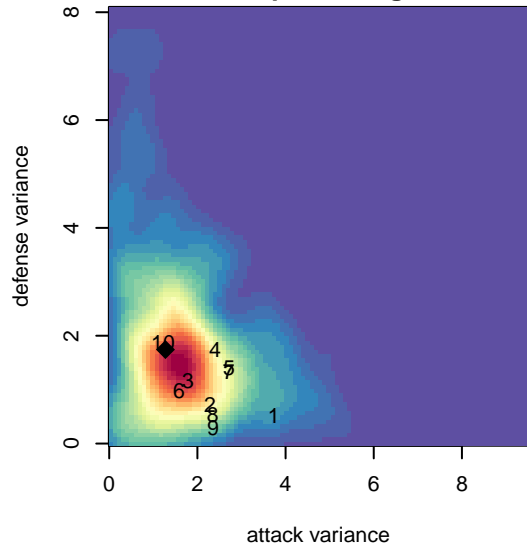
alt names used:
 FC Spokane G03 Black–O'Conner/Clayton
 FC SPOKANE CLAYTON GRAY (USA)
 FC SPOKANE O'CONNOR/CLAYTON BLACK
 FC Spokane G03 Black–O'Conner/Clayton

Venues played:
 2015 River City Cup U–12 Gold U12
 2015 Pend Orielle Cup Silver
 2015 PSPL–Inland Div 1 U12
 2015 Spr PSPL–Inland Div 1 U12

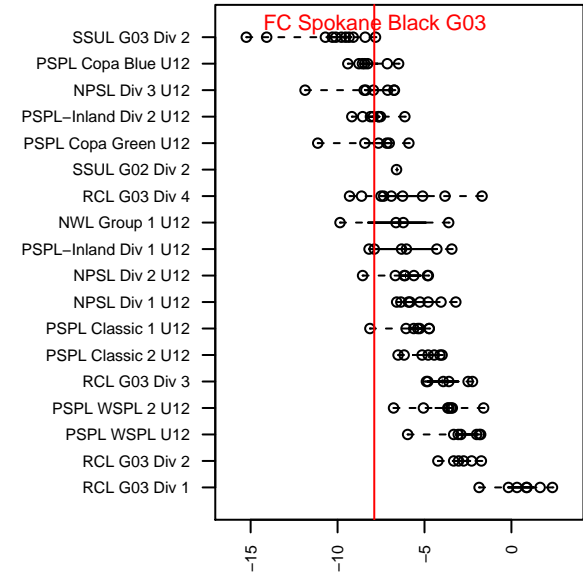
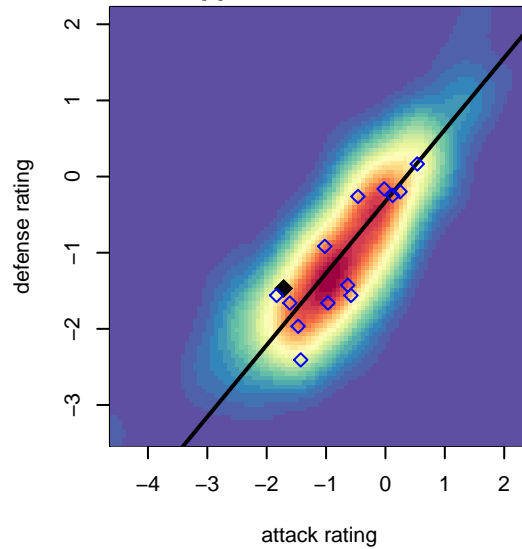
FC Spokane Black G03
 Dots are actual minus expected GF (blue circles) and GA (red triangles).
 Blue line is smoothed change in attack strength. Red is smoothed change in defense strength.



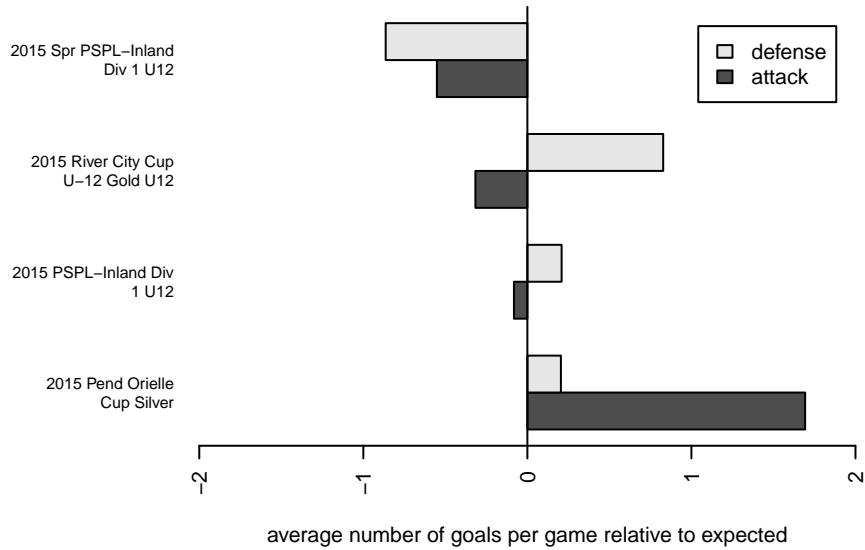
**attack and defense variance (black dot)
relative to other teams
and top 10 in region**



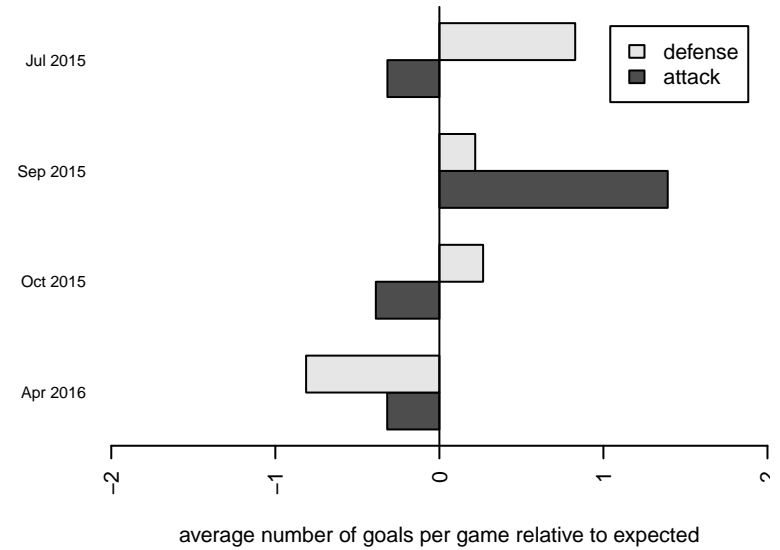
**attack and defense rating
relative to others at age
and all opponents in last 13 months**



Performance relative to 13 month average



Performance relative to 13 month average



date	home		away		venue	pred.home	pred.away
:016-04-30	Breakers Kalua G04	4	FC Spokane Black G03	0	2015 Spr PSPL-Inland Div 1 U12	1.37	1.06
:016-04-17	FC Spokane Black G03	0	WA East G03	4	2015 Spr PSPL-Inland Div 1 U12	0.42	3.99
:016-04-16	FC Spokane Black G03	1	Cheney Storm FC G03	0	2015 Spr PSPL-Inland Div 1 U12	0.66	1.62
:016-04-02	FC Spokane Black G03	1	Endeavour Soccer Academy Wallace G03	4	2015 Spr PSPL-Inland Div 1 U12	1.14	1.77
:016-03-20	Three Rivers SC Black District G03	2	FC Spokane Black G03	0	2015 Spr PSPL-Inland Div 1 U12	2.09	1.06
:016-03-20	ASE Royal G03	3	FC Spokane Black G03	0	2015 Spr PSPL-Inland Div 1 U12	0.98	0.98
:015-11-14	FC Spokane Black G03	1	Ellensburg Fire G03	2	2015 PSPL-Inland Div 1 U12	0.32	2.64
:015-11-07	Breakers Kalua G04	2	FC Spokane Black G03	0	2015 PSPL-Inland Div 1 U12	1.37	1.06
:015-10-31	Valor Cargile G03	1	FC Spokane Black G03	0	2015 PSPL-Inland Div 1 U12	0.84	1.80
:015-10-24	WA East G03	4	FC Spokane Black G03	1	2015 PSPL-Inland Div 1 U12	3.99	0.42
:015-10-18	FC Spokane Black G03	0	Breakers Kalua G04	0	2015 PSPL-Inland Div 1 U12	1.06	1.37
:015-10-17	CDA Sting Gold G03	3	FC Spokane Black G03	0	2015 PSPL-Inland Div 1 U12	4.01	0.25
:015-10-10	FC Spokane Black G03	1	Endeavour Soccer Academy Wallace G03	1	2015 PSPL-Inland Div 1 U12	1.14	1.77
:015-10-03	FC Spokane Black G03	1	Cheney Storm FC G03	3	2015 PSPL-Inland Div 1 U12	0.66	1.62
:015-09-26	Ellensburg Fire G03	3	FC Spokane Black G03	1	2015 PSPL-Inland Div 1 U12	2.64	0.32
:015-09-25	FC Spokane Black G03	3	Valor Cargile G03	0	2015 PSPL-Inland Div 1 U12	1.80	0.84
:015-09-13	Breakers White G03	1	FC Spokane Black G03	4	2015 Pend Orielle Cup Silver	1.02	2.70
:015-09-12	FC Spokane Grey G03	0	FC Spokane Black G03	5	2015 Pend Orielle Cup Silver	0.75	1.42
:015-09-12	Valor Cargile G03	1	FC Spokane Black G03	2	2015 Pend Orielle Cup Silver	0.84	1.80
:015-07-26	Lethbridge FC Chargers 2004G	2	FC Spokane Black G03	0	2015 River City Cup U-12 Gold U12	4.77	0.32
:015-07-25	WA East G03	3	FC Spokane Black G03	0	2015 River City Cup U-12 Gold U12	3.99	0.42
:015-07-25	SSC Shadow A G03	8	FC Spokane Black G03	0	2015 River City Cup U-12 Gold U12	6.72	0.21